

MAXPOS / MAXPOS STUDIO: Export / upload the configuration into a *.mxpj project file

Topic:

How to export the parameter settings of a MAXPOS?

Situation:

If you want to ...

- ... copy the configuration of a MAXPOS to another one,
- ... save the configuration as part of your machine's or system's documentation,
- ... provide the configuration file as part of information required by support,

this can be done by the MAXPOS *.mxpj project file.

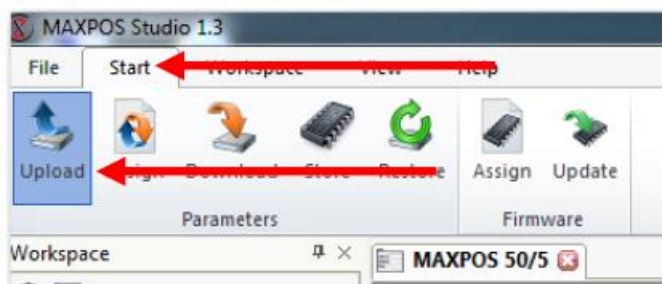
Solution:

The "MAXPOS Studio" software is based on a project structure to manage system and drive parameter settings. There are two steps required to save the parameter settings of a MAXPOS finally in a *.mxpj project file:

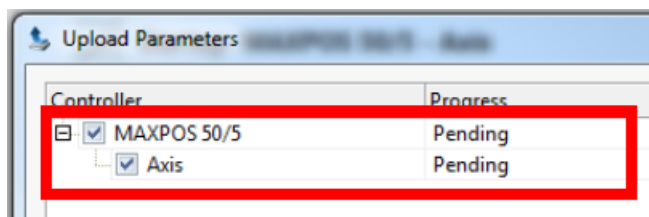
1. Copy the MAXPOS configuration into the project information

The currently valid MAXPOS configuration is stored in its internal memory. It is required to read out the MAXPOS data and copy it into the project structure of "MAXPOS Studio".

- Click the **tab "Start"**.
- Click the **icon "Upload"**.



- Mark the checkboxes "MAXPOS 50/5" and "Axis" of the **dialog window "Upload Parameters"**



maxon motor control

maxon motor ag
Brünigstrasse 220
CH – 6072 Sachseln
www.maxonmotor.com

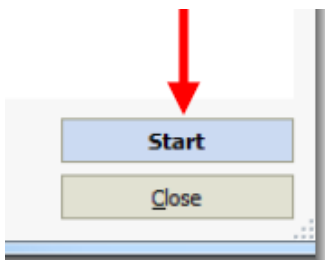
MAXPOS / MAXPOS Studio Export von Konfigurationen und der Projektdatei

Version: 1.0 (Eng.)
Author: WJ
Date: 2018-06-11

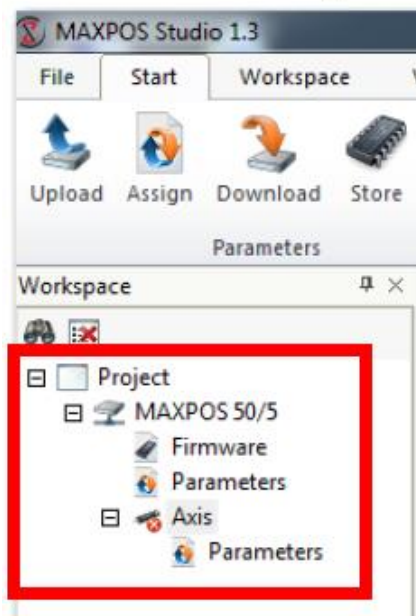
- or press the button "Select All".



- Finally press the button "Start".



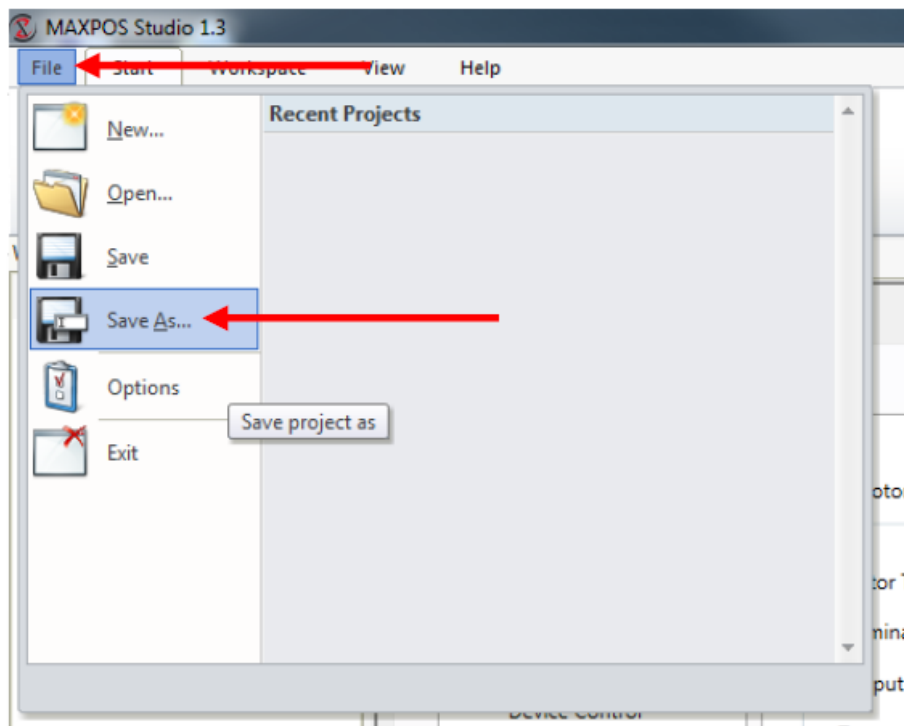
- The currently active MAXPOS parameter settings have been read out and copied into the project structure of "MAXPOS Studio".



2. Save the project information into a file

The project information of "MAXPOS Studio" corresponds to the settings of the MAXPOS after step 1 was processed. This project data can be saved in a so-called *.mxpj project file.

- Click on the **menu item "File"**.
- Select the **menu item "Save As"**.



- Select the desired **directory and file name** by the **Windows dialog "Save As"**.
- Press the **button "Save"** of the file dialog. All parameters of the "MAXPOS Studio" project are saved in the *.mxpj project file.

Important to keep in mind:

The *.mxpj file just holds the data of the "MAXPOS Studio" project structure. It is mandatory to copy the current MAXPOS configuration into the project structure first of all (like described by item 1).